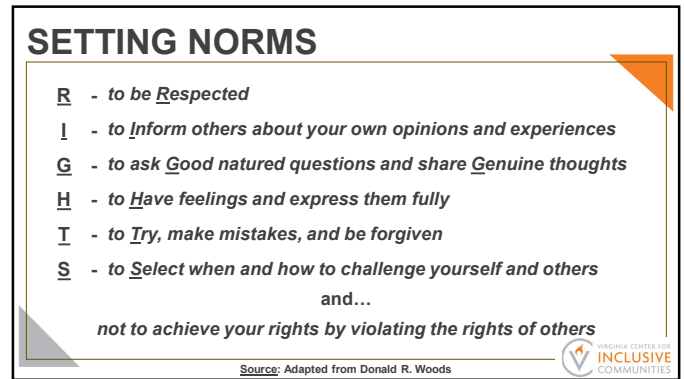
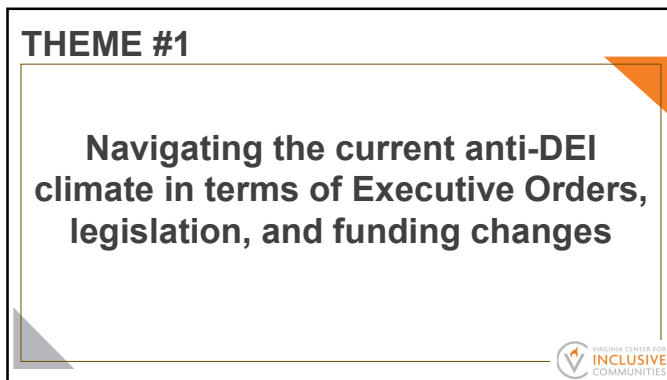




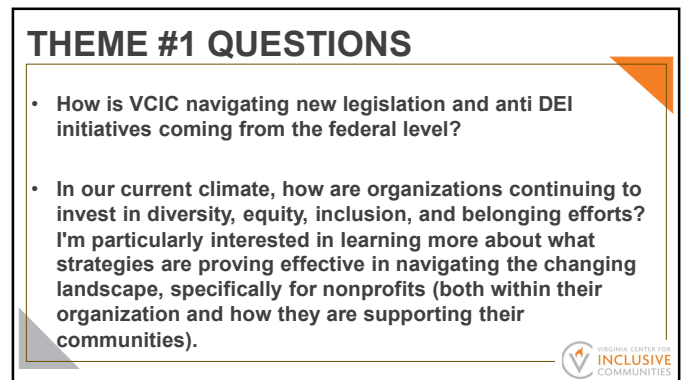
1



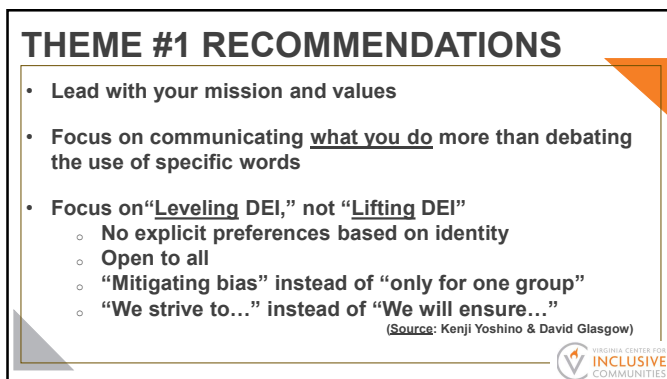
2



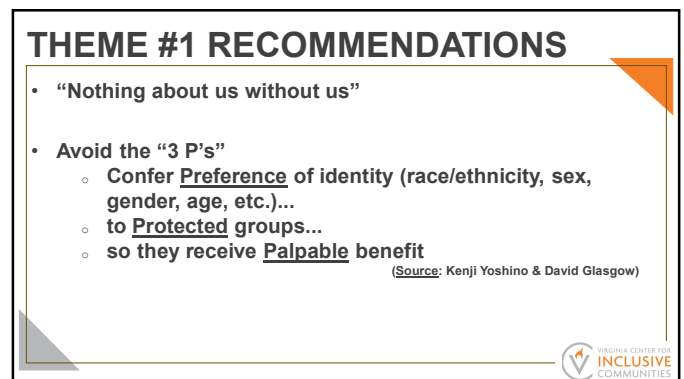
3



4



5



6

## THEME #2

### Equity and inclusion considerations related to AI usage



7

## THEME #2 QUESTIONS

- What are promising or concerning trends you're seeing around AI being used for equity work?
- Are there ways AI can support inclusive community engagement without losing the authenticity of human-to-human dialogue?
- What is VCIC's perspective on preparing the next generation of leaders and practitioners to navigate the intersection of AI, ethics, and equity?



8

## THEME #2 RECOMMENDATIONS

- Co-create guidelines and have clear expectations around usage related to privacy, work product, editing, etc.
- Consider environmental impact, with disproportionate harm to already marginalized communities
- Be mindful of bias in responses
  - Related to biases in inputs
  - Related to when inputs cut off
- Be aware of bias in reactions to AI usage



9

## DISCUSSION / Q&A

What are other questions you have or topics you would like to discuss?



10

## POWER SESSION EVALUATION



[www.inclusiveVA.org/PSI](http://www.inclusiveVA.org/PSI)



11

## STAY IN TOUCH



**Website:** [www.inclusiveVA.org](http://www.inclusiveVA.org)  
**Email:** [contact@inclusiveVA.org](mailto:contact@inclusiveVA.org)  
**Phone:** (804) 515-7950 | (757) 390-0720  
**Facebook:** [www.facebook.com/inclusiveVA](https://www.facebook.com/inclusiveVA)  
**Instagram:** [inclusive\\_VA](https://www.instagram.com/inclusive_VA)  
**LinkedIn:** [inclusiveVA.org/linkedin](https://www.linkedin.com/company/inclusiveVA.org/linkedin)



12